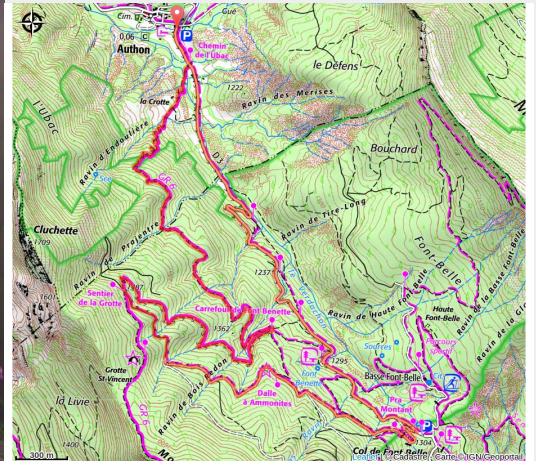


Col de Fontbelle by mountain bike

Sisteron - Authon



Station vélo d'Authon (CCSB)



A “mountain” vibe. Welcome to the Monges Mountains! Warm up on roads and trails on the way up (with a quick stop at the ammonite rock), and finish with a descent that’s 100% fun, steep single-track. We never get tired of it!
Follow the mountain bike trail N°19 (VTT N°19)

Useful information

Practice : Mountain Bike

Duration : 2 h 30

Length : 11.4 km

Trek ascent : 408 m

Difficulty : Medium

Type : Loop

Themes : Summit and pass

Trek

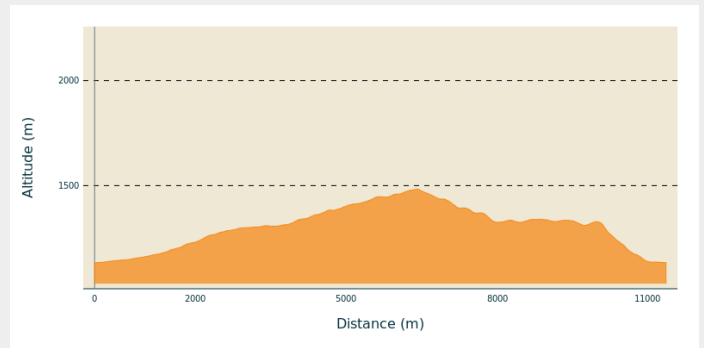
Departure : Parking lot next to the Gîte d'étape des Monges, Authon

Arrival : Parking lot next to the Gîte d'étape des Monges, Authon

Markings : 🚲 VTT

Cities : 1. Authon
2. Castellard-Mélan

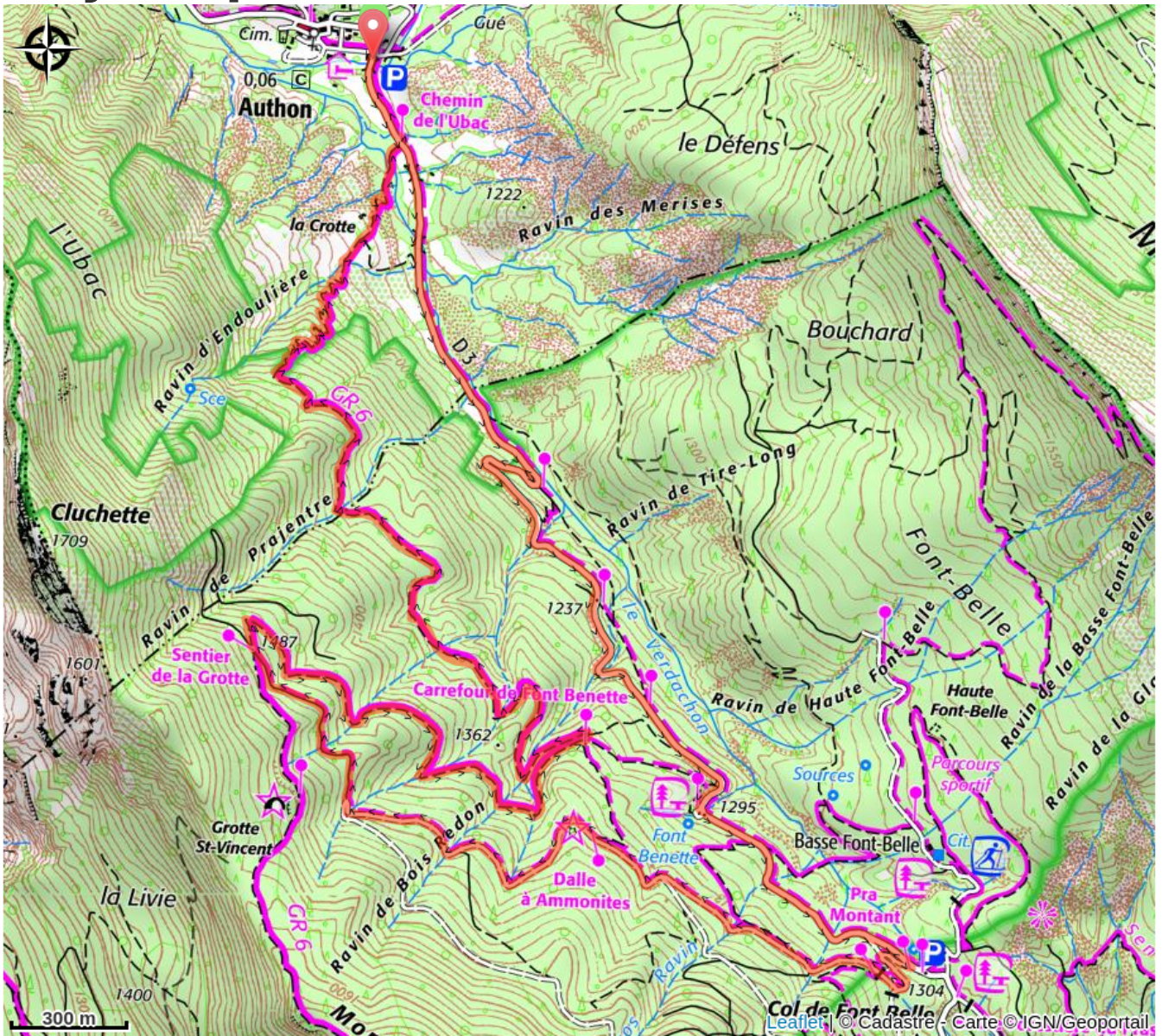
Altimetric profile



Min elevation 1133 m Max elevation 1483 m

Starting from the charming village of Authon, the route begins gently on roads and trails. The gradual climb takes you up to the Col de Fontbelle, offering superb panoramic views of the surrounding hills. Then a fun and challenging descent—100% single-track—through the woods and along winding trails will delight riders who love to push their limits.

On your path...



All useful information

Advices

In the village of Authon, there is a covered bike station: bike wash, air pump, and water fountain. Self-service.

How to come ?

Transports

Let's limit our trips and use public transportation and carpooling: <https://zou.maregionsud.fr>

Access

From the roundabout north of Sisteron, take the D 951, then the D 3 to Saint Geniez. Drive through the village and continue on the D 3 to reach Authon.

Advised parking

Parking lot next to the Gîte d'étape des Monges, Authon

Information desks

Office de Tourisme Sisteron Les Alpes Provençales - bureau de Sisteron

1 place de la République, 04200 Sisteron

sisteron@sisteron-buech.fr

Tel : 04 92 61 36 50

<https://www.sisteron-alpesprovencales.fr/>



Bureau d'accueil des via ferrata

viaferratalecaire@sisteronais-buech.fr

Tel : 04 92 68 40 39

