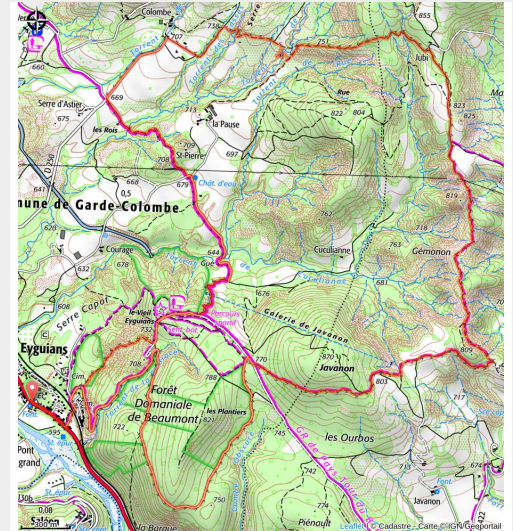


Le château d'Arzeliers by mountain bike

Laragne / Méouge - Garde-Colombe



Ruines du château d'Arzeliers



This route takes you past the Château d'Arzeliers and Old Eyguians, two of the region's most important historic sites, through beautiful natural landscapes. The varied route includes sections on roads, trails, and paths.

Follow the red Mountain Bike Trail No. 3

Useful information

Practice : Mountain Bike

Duration : 2 h

Length : 14.8 km

Trek ascent : 566 m

Difficulty : Medium

Type : Loop

Themes : Forest, History and architecture

Trek

Departure : Main place in Eyguians

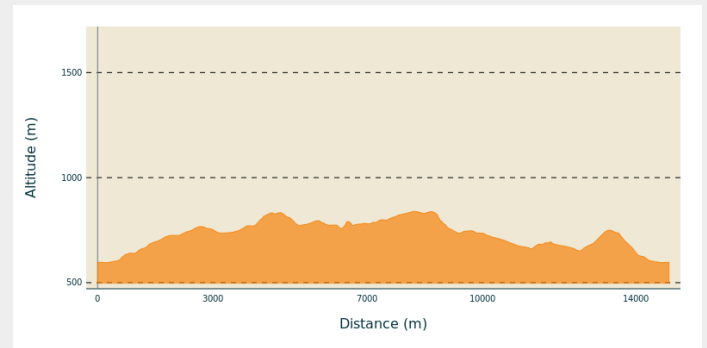
Arrival : Main place in Eyguians

Markings : 🚲 VTT

Cities : 1. Garde-Colombe

2. Laragne-Montéglin

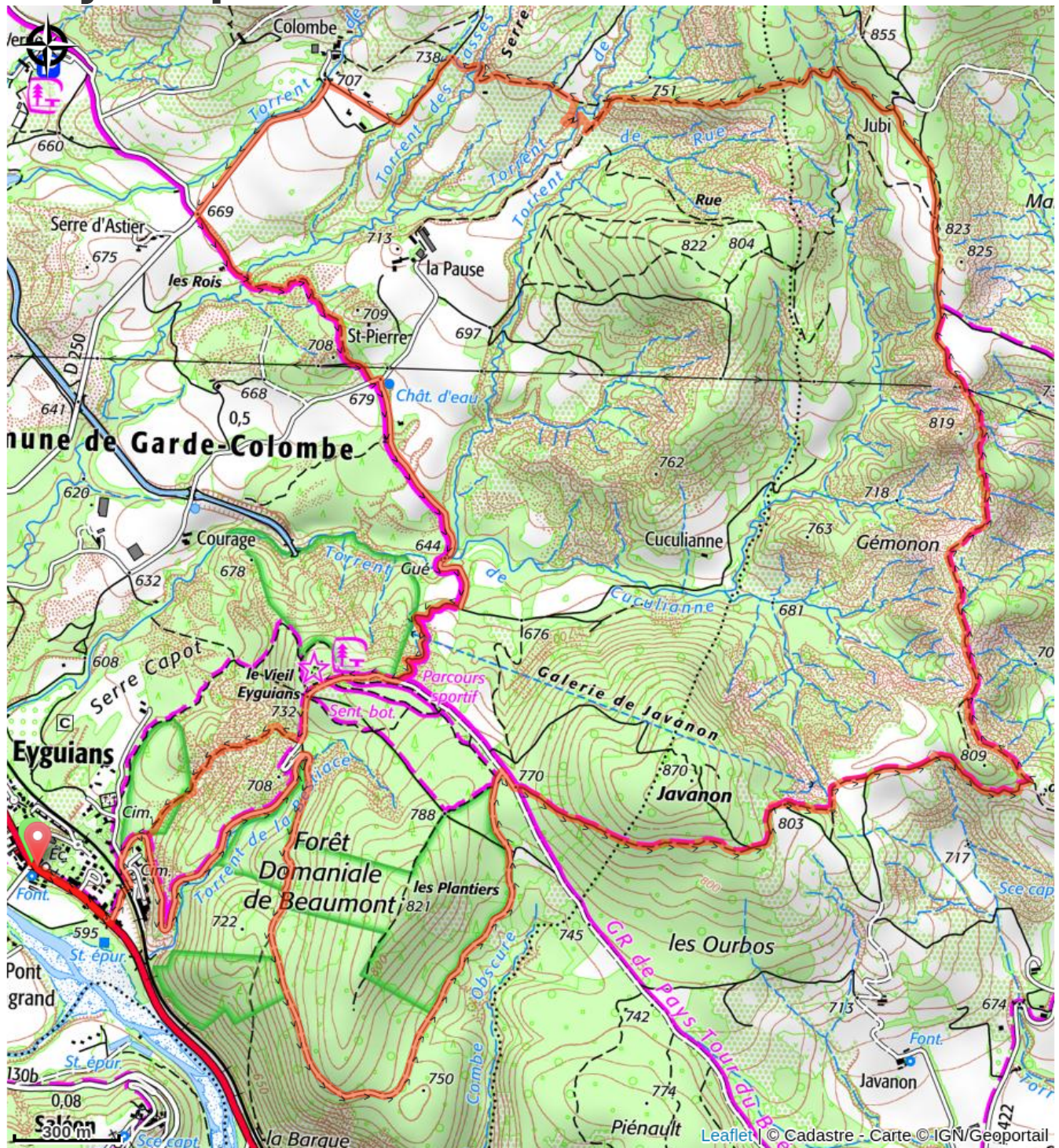
Altimetric profile



Min elevation 595 m Max elevation 840 m

The route begins with a climb up to the wooded hills of Eyguians. It then follows a track, then a trail leading to the Château d'Arzeliers, before heading back through the marl and the forest located between the château and Old Eyguians. Once you reach the old village of Eyguians, all that's left is to head back down to the starting point via the trails through the marl.

On your path...



✧ Viewpoint (A)

✧ Viewpoint (B)

All useful information

Advices

Recommended bikes: mountain bikes and e-bikes

How to come ?

Transports

Let's limit our trips and use public transportation and carpooling: <https://zou.maregionsud.fr>

Access

From Laragne (6 km), take the D 1075 north to Eyguians.

Advised parking

Parking lot in Eyguians

Information desks

Office de Tourisme Sisteron Les Alpes Provençales - bureau d'Orpierre

Place du village, None 05700 Orpierre

orpierre@sisteron-buech.fr

Tel : 04 92 66 30 45

<https://www.sisteron-alpesprovencales.fr/>



Office de Tourisme Sisteron Les Alpes Provençales - bureau de Laragne

Place des Aires, None 05300 Laragne-Montéglin

laragne@sisteron-buech.fr

Tel : 04 92 65 09 38

<https://www.sisteron-alpesprovencales.fr/>



On your path...

✧ Viewpoint (A)

On the climb up Vieil Eyguians, you'll find a small bench where you can enjoy a beautiful view of Mount Chabre, the Eyglière ridge, and the Rocher de Beaumont.

✧ Viewpoint (B)

Enjoy a magnificent view of the Garde-Colombe valleys on one side and the Lazerois valleys on the other. The Chabre and Saint-Genis mountains are also visible.