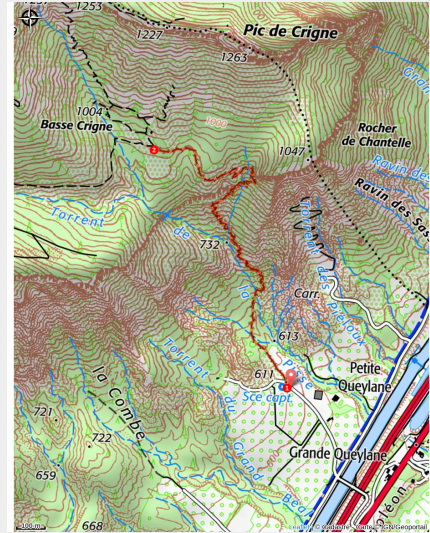


Sous le Pic de Crigne

Laragne / Méouge - Monétier-Allemont



Très belle cascade suite aux fortes pluies (CCSB)



All along this short, hot and wild hike, the path overlooks the Durance valley and its orchards. During the ascent, the Mediterranean vegetation and the remarkable view offer a pleasant surrounding. The Bec de Crigne is a Natura 2000 site for the particularly rich bird species gathering at the cliffs (107 birds species).

Useful information

Practice : Hiking

Duration : 3 h 30

Length : 3.9 km

Trek ascent : 384 m

Difficulty : Medium

Type : Return trip

Themes : Flora, Geology, Off the beaten track, Pastoralism

Trek

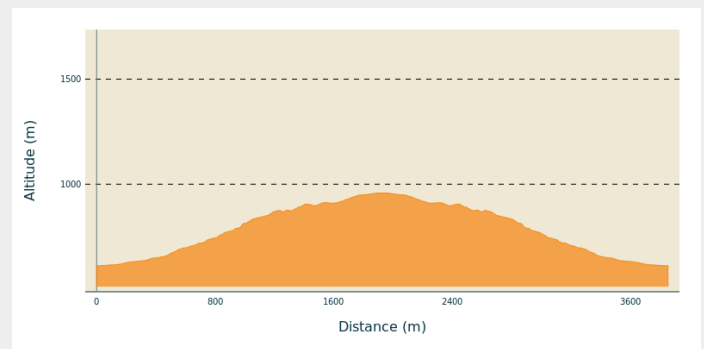
Departure : Petite Queylane (ferme fruitière), Monetier-Allemont

Arrival : Petite Queylane (ferme fruitière), Monetier-Allemont

Markings : — PR

Cities : 1. Monêtier-Allemont

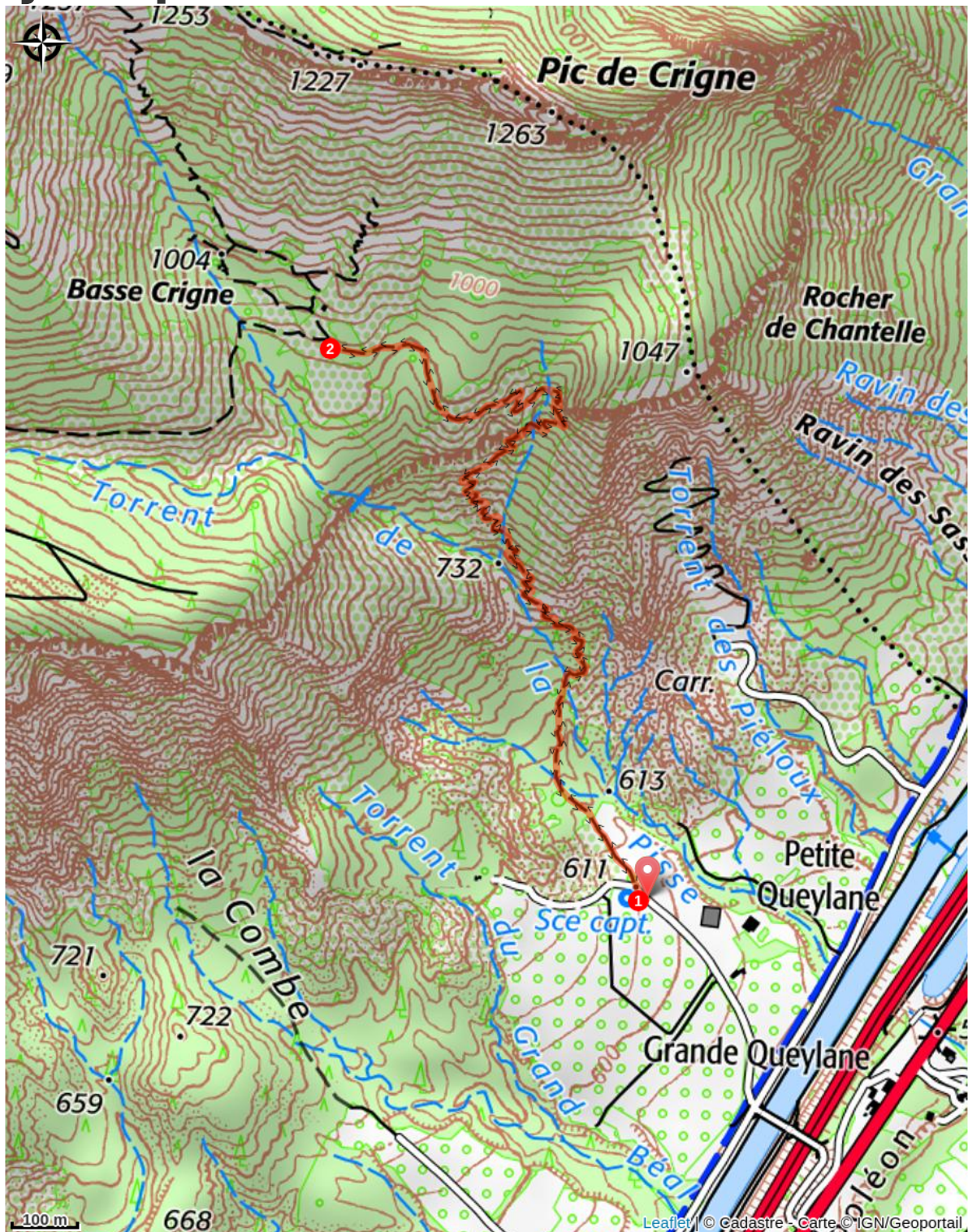
Altimetric profile



Min elevation 612 m Max elevation 958 m

1. At the end of the small road (which quickly turns into a track) and just after the fruit farm, turn right at the crossroads where the Natura 2000 information panel is located. At the departure, the path runs along the orchards. The path then goes up through the undergrowth and crosses the river sometimes. This old mule track, carved into the rock is climbing and winding along the face of spectacular cliffs. Several viewpoints of the Durance Valley punctuate the ascent. After a long series of bends, the track turns right under the cliff and pass a breach. Continue on the left in a pleasant undergrowth and arrive under the sheepfold of Basse Crigne (950 m).
2. In the meadow under the sheepfold, the path is almost hidden and branches off to the left (it does not go up towards the sheepfold). Continue a few meters and reach a thalweg. The trail is very pleasant, fairly flat and on a balcony. Continue direction south, through old meadows that the forest is gradually recolonizing. When leaving the forest, reach a track, cross it and take the path almost immediately opposite. The path is wild and climbs parallel to the track (on its left) in the direction of Haute Crigne (please note carefully the markings). Reach the Haute bergerie de Crigne (1130 m).
3. Go back down by the same route.

On your path...



All useful information

How to come ?

Transports

Think about public transport and carpooling: <https://zou.mareregionsud.fr>

Access

From Laragne (14 km), take the D942 road in the direction of Lazer/Gap. Follow this road upto the Durance canal, before getting to Monétier-Allemont. Turn left just before the bridge above the canal, and follow the road upto the next bridge on this canal. Once at the bridge, take left through a small road. Pass a fruit cooperative, and park on a large area at the end of the road, where it becomes a dirt track (water tank). The hike starts from there.

Advised parking

Parking à côté du réservoir d'eau, juste au dessus du panneau Natura 2000, Petite Queylane (Monetier-Allemont)

Information desks

Office de Tourisme Sisteron Buëch - bureau de Laragne

Place des Aires, 05300 Laragne-Montéglin

laragne@sisteron-buech.fr

Tel : 04 92 65 09 38

<http://www.sisteron-buech.fr>

