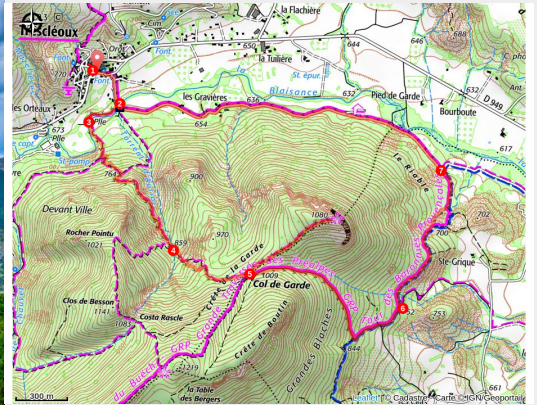


Tour du Mont de Garde

Orpierre - Trescléoux



Mont Garde (©AgenceKros Remi Fabregue)



Average difficulty hike to discover the pretty village of Trescléoux and its treasures; fountains, washhouses, colored roofs, house facades.

Useful information

Practice : Hiking

Duration : 3 h 30

Length : 8.3 km

Trek ascent : 585 m

Difficulty : Medium

Type : Loop

Themes : Geology, History and architecture, Summit and pass

Trek

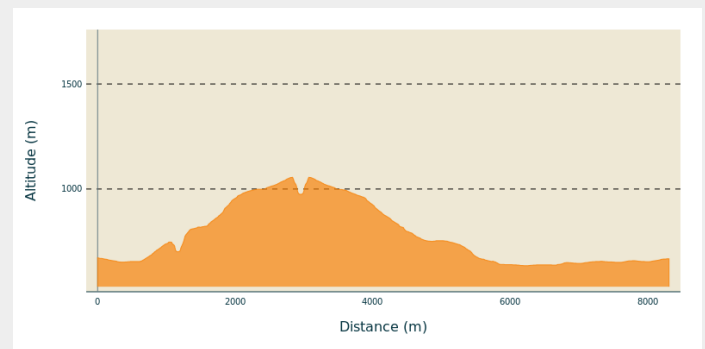
Departure : Church parking lot, Trescléoux

Arrival : Church parking lot, Trescléoux

Markings :  PR

Cities : 1. Trescléoux
2. Garde-Colombe

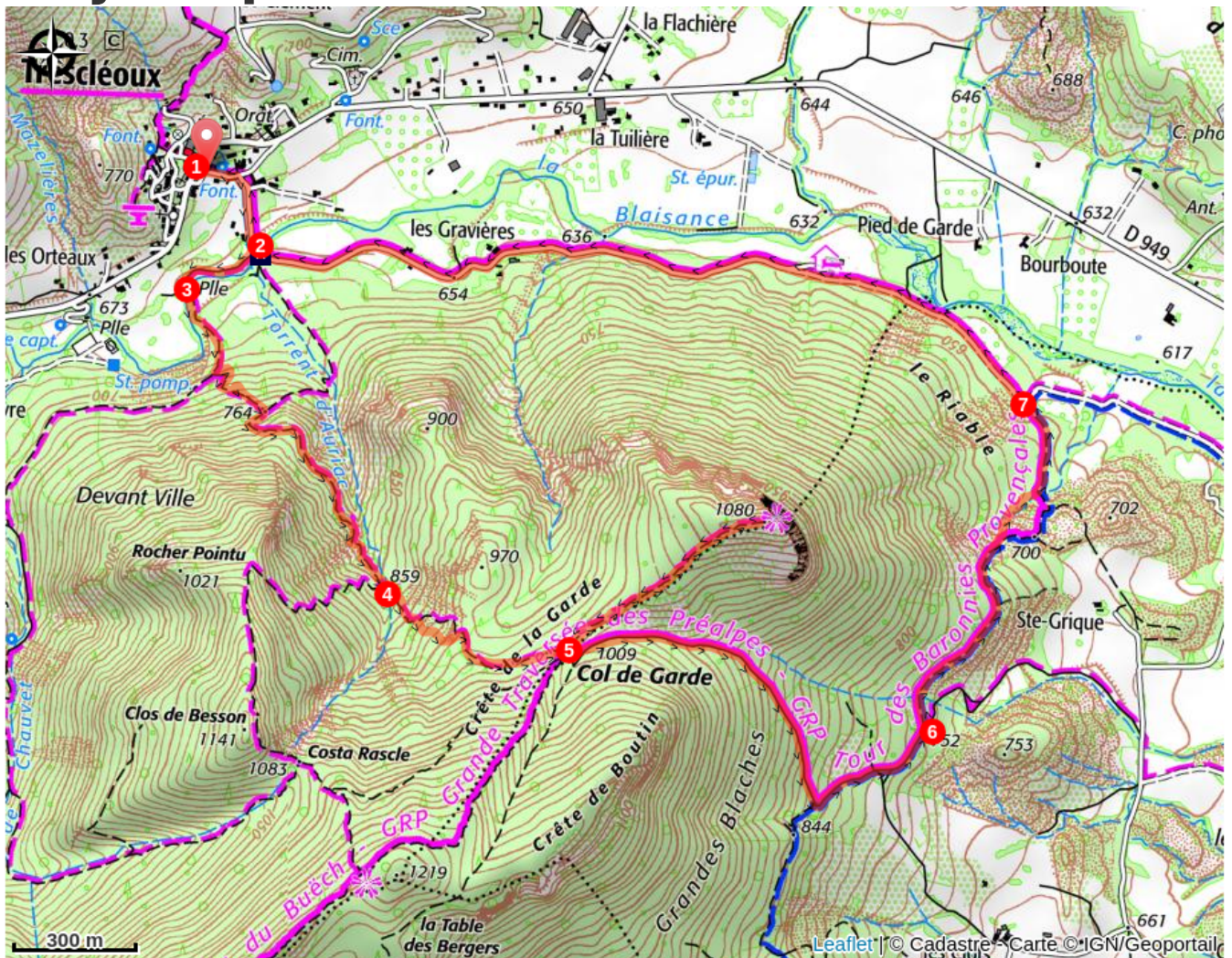
Altimetric profile



Min elevation 635 m Max elevation 1056 m

1. From the church car park, go down the stairs following the GR markings to La Blaisance
2. At the intersection just before the Gravières bridge, turn right up to the Blaisance river.
3. At the intersection of the Pont du Vieux Moulin (old mill's bridge), cross the bridge on the left then walk along a meadow before starting to climb through a pine forest. At the "les Nayses" post, turn left and continue to climb to the pass on a steep path. At the fork, continue on the opposite side.
4. Cross the Auriac torrent (often dry), then continue on a steep, ravine path to the Col de Garde (1009 m).
5. At the Col de Garde, turn left to reach the top of the Rocher de Garde (1080 m - 15 min).
6. At the intersection of the 4 paths, turn left and follow the direction of Trescléoux. Continue on this path which winds through the undergrowth then descends a marly ridge.
7. Then join a track. At the "Pied de Garde" post (640 m), take the track on the left which becomes a road. Stay on this small road which runs along the Blaisance to return to the Gravières bridge. At the bridge, find the starting intersection and continue straight on to return to the car park.

On your path...



 La Blaisance (A)

All useful information

How to come ?

Transports

- Think about public transport and carpooling: <https://zou.maregionsud.fr>

Access

From Laragne (11 km), take the D 1075 then the D 30 (Eyguians junction), at the roundabout, take the 1st right towards Trescléoux. Continue on the D 949.

Advised parking

Church parking lot, Trescléoux

Information desks

Office de Tourisme Sisteron Buëch - bureau d'Orpierre

Place du village, Nive 05700 Orpierre

orpierre@sisteron-buech.fr

Tel : 04 92 66 30 45

<http://www.sisteron-buech.fr>



On your path...

La Blaisance (A)

La Blaisance takes its source upstream from the town of Montjay, it is a confluence of several torrents. It flows to the town of Garde-Colombe, passing through Trescléoux. It then flows into the Buëch.