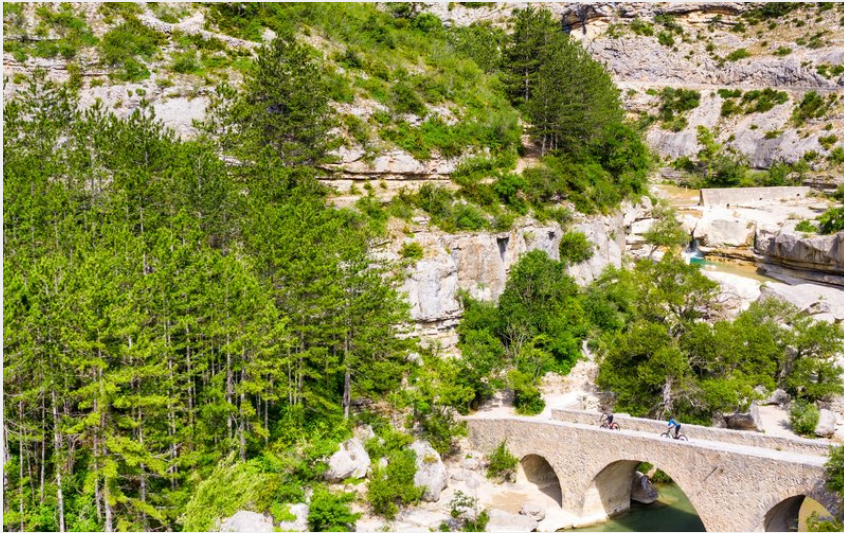
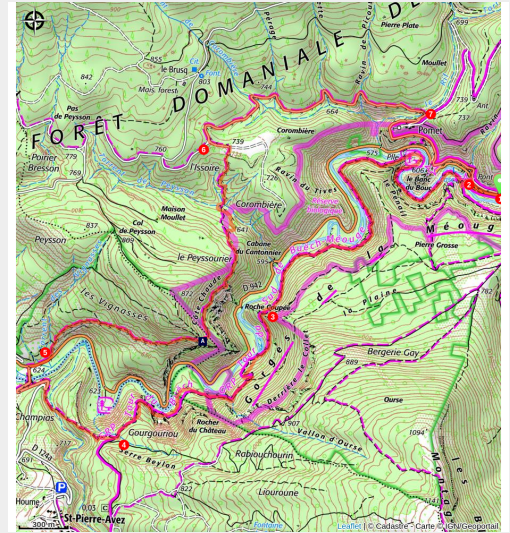


Méouge Gorges circuit

Laragne / Méouge - Val Buëch-Méouge



Pont roman (Remi Fabregue -Agence Kros)



This loop hike, often in balcony along the two slopes of the gorges, is punctuated by sequences of climbs and descents. In warm weather, swimming is recommended upon arrival.

Useful information

Practice : Hiking

Duration : 5 h

Length : 12.6 km

Trek ascent : 634 m

Difficulty : Hard

Type : Loop

Themes : Geology, History and architecture, Lake, waterfall and river

Trek

Departure : Roman bridge, Pomet

Arrival : Roman bridge, Pomet

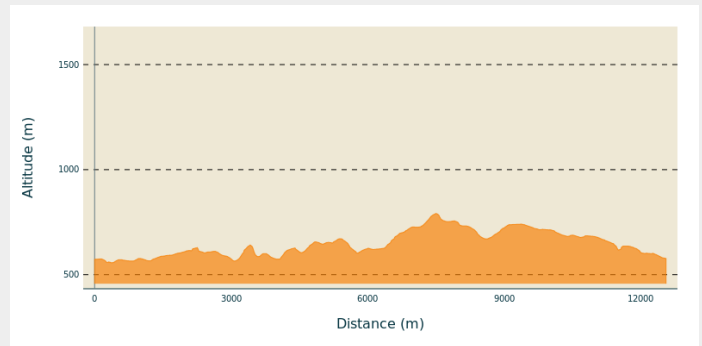
Markings : — PR

Cities : 1. Val Buëch-Méouge

2. Saint-Pierre-Avez

3. Barret-sur-Méouge

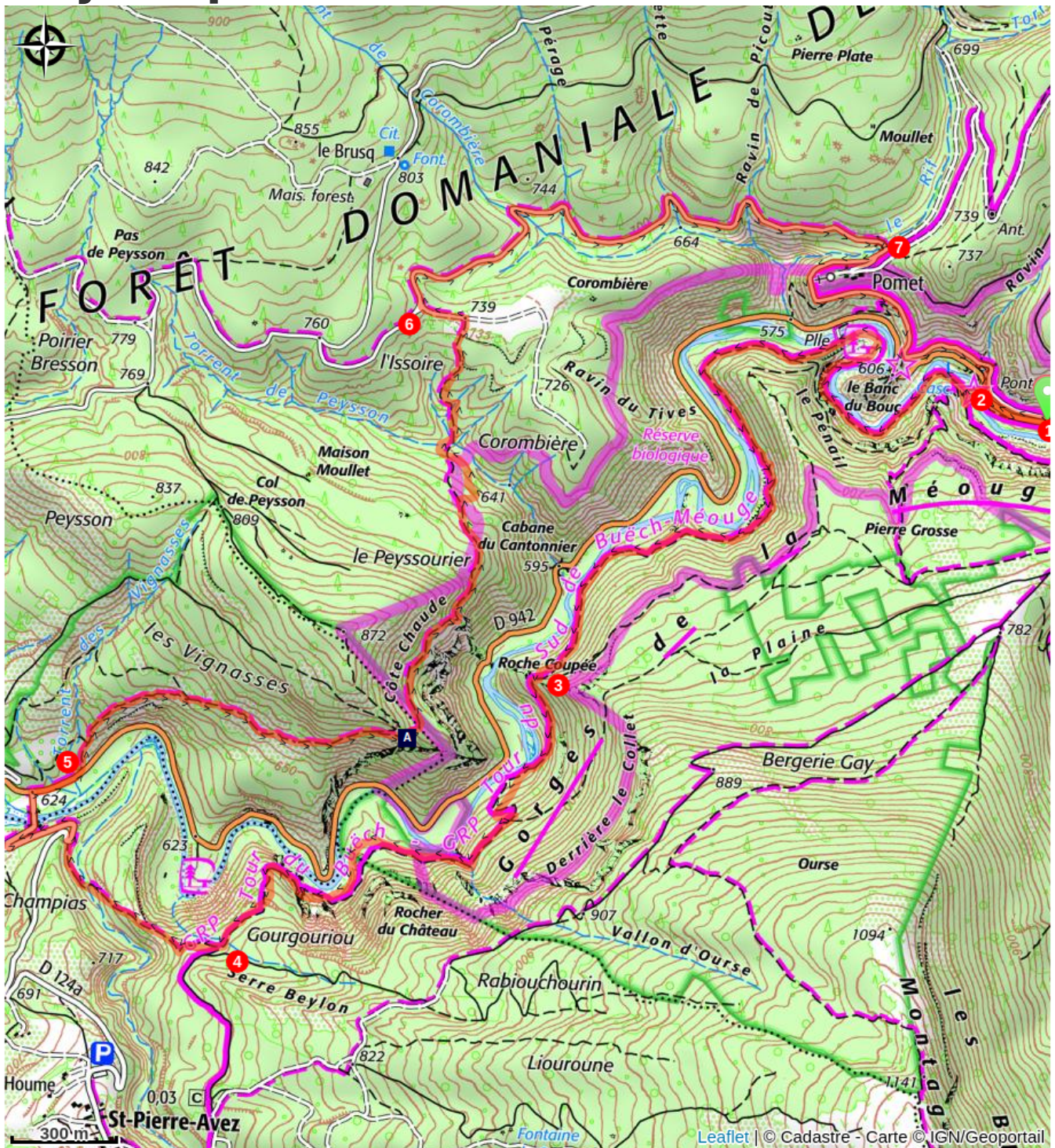
Altimetric profile



Min elevation 557 m Max elevation 791 m

1. Follow up the D 942 for 100 m, take the path below the wall and cross the Roman bridge (the ruins of the Pomet mill washed away by the 1901 flood are on the right). Go up the left path.
2. At the fork, take the right path (direction "Saint-Pierre-d'Avez"). It leads you through the gorges like on a roller coaster. After the picnic area, leave the path on the right that goes towards the footbridge, walk up to the left, then stay to the right (direction "Rocher du Château"). The trail crosses continuously. Climb the steep path and walk straight on.
3. At the little pass which dominates the Roche Coupée, enjoy the viewpoint and descend. The roller coaster path, sometimes dug into the cliff, continues close to the Méouge (short narrow damages passages!). Go around the rock of the Castle (twisted natural tower, remain from erosion). After the steep path and the crossing, you reach an intersection.
4. Follow the path on the right (direction "Barret-sur-Méouge"). Go down the slope, ford the torrent d'Ourse and go up. At the post 367, go down the D 124a then follow the D 942 to the right for 150 m.
5. Climb the path on the left in the garrigue (direction "Pomet"). Continue on a roller coaster path to the ridge (viewpoint). Go down the slope on the other side, turn left and go across for reaching a second ridge, overlooking the Roche Coupée. Go down to the left to the pine plantation. Continue sideways then downhill. Ford the Peysson torrent, go up on the opposite side in the pine forest and reach a large clearing on the ridge (landing zone for paragliders). Take the track on the left.
6. Go down the road on the right for 2 km, cross the bridge and turn right towards Pomet.
7. Do not go up in the hamlet, but continue by the road below. It overlooks the Méouge, passes the Banc du Bouc (viewpoint indicator) and leads back to the parking lot.

On your path...



✧ Viewpoint (A)

All useful information

Advices

- Loop hike not recommended in winter nor after violent storms (ice waterfalls in the gorges)

How to come ?

Transports

- Let's limit our trips and use public transportation and carpooling: <https://zou.maregionsud.fr>

Access

From Laragne-Montéglin (7 km), follow the D 942 southwest to the gorges of Méouge

Advised parking

Along the D 942 (at the junction with the route de Pomet and the Chabre flight site), in Châteauneuf-de-Chabre

Information desks

Office de Tourisme Sisteron Les Alpes Provençales - bureau de Laragne

Place des Aires, None 05300 Laragne-Montéglin

laragne@sisteron-buech.fr

Tel : 04 92 65 09 38

<https://www.sisteron-alpesprovencales.fr/>



On your path...

* Viewpoint (A)

The Peysson loop trail offers beautiful views. It opens on a wide panorama onto the Gorges de la Méouge, the Laragne valley and the village of Saint-Pierre-Avez.