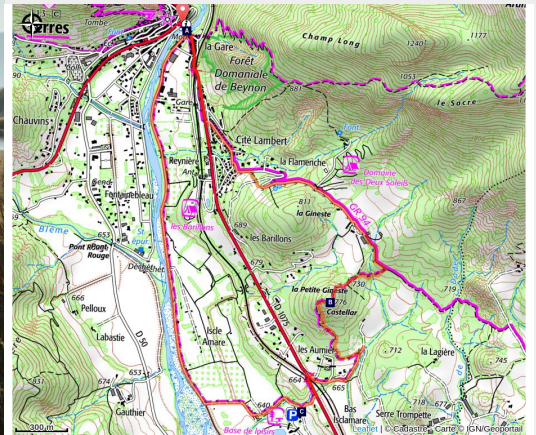


# Les voies de nos Ancêtres

Serres - Serres



Au bord du Buëch (CCSB)



*The perfect route for discovering the sport. Set off on a run in the footsteps of Homo faber, who once inhabited the Ginestes region. Excavations have unearthed clay pots, bronze razors, engraved bracelets, and more...*

Follow the yellow markers on the PR trail

## Useful information

Practice : Trail

Duration : 1 h 30

Length : 7.2 km

Trek ascent : 198 m

Difficulty : Very easy

Type : Loop

Themes : History and architecture, Lake, waterfall and river

# Trek

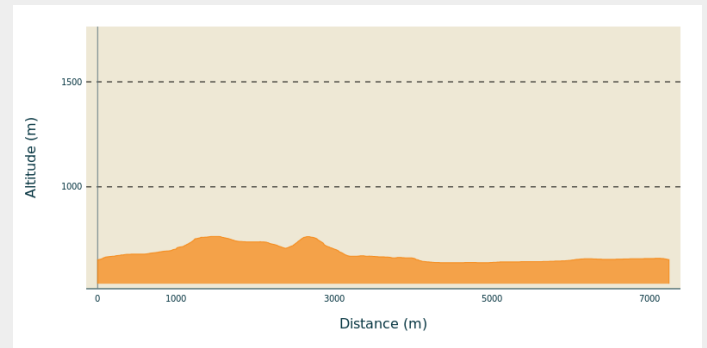
**Departure** : Tourist Information Office, Serres

**Arrival** : Tourist Information Office, Serres

**Markings** :  Trail

**Cities** : 1. Serres

## Altimetric profile

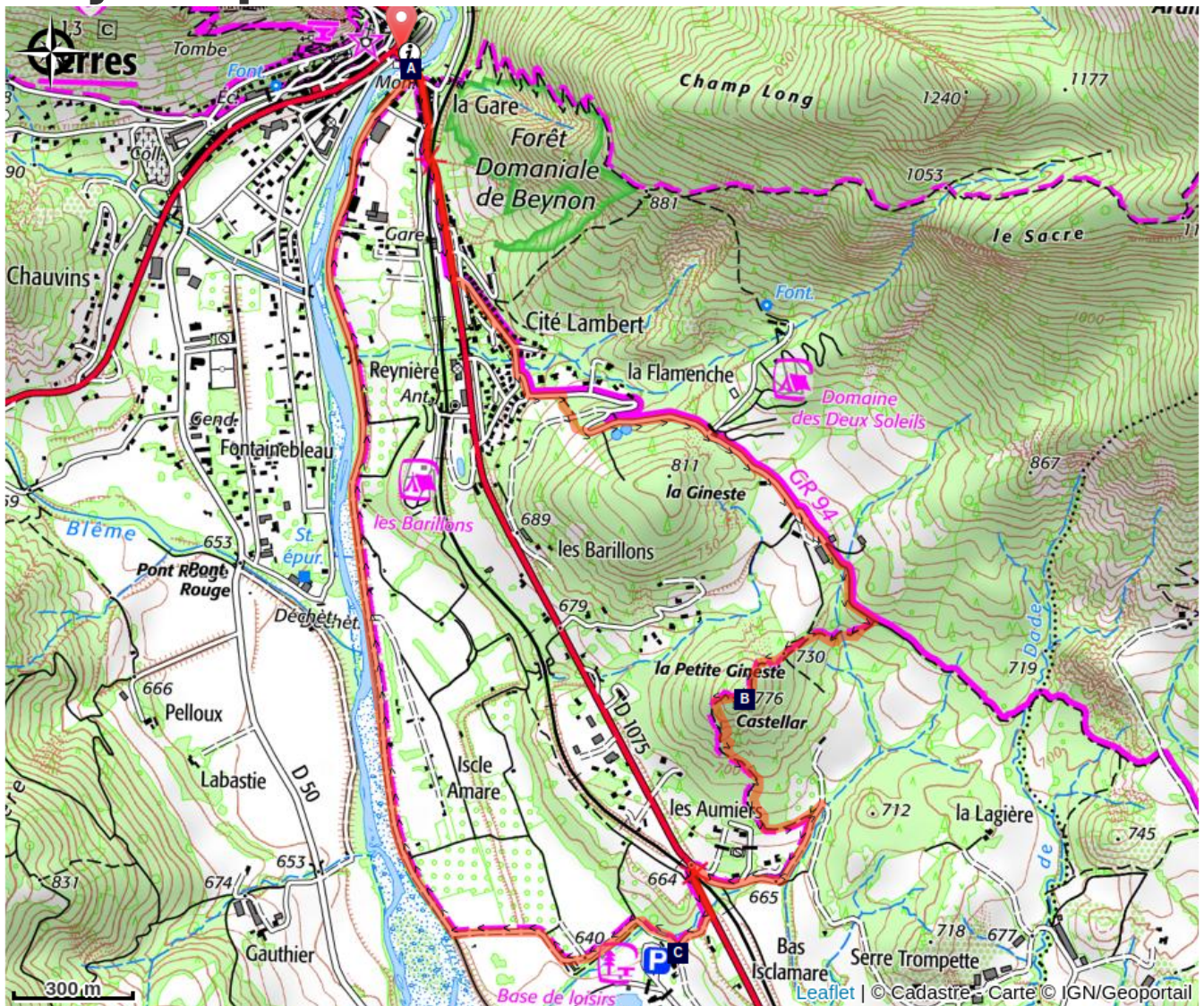




Min elevation 639 m Max elevation 764 m

This route, with minimal elevation gain, follows the Buëch River and takes you along the paths of our ancestors to explore Les Ginestres (a place where broom once grew, and where evidence of a sustained settlement by Homo faber has been found: earthenware pots, bronze razors, engraved bracelets, urns, and more).

The route features a series of short ascents and descents on varied terrain leading to the Germanette recreation center. Return to Serres via a trail along the Buëch River. On the way back, it's worth taking a stroll through the narrow streets of the old town.

# On your path...



-  The Buëch River (A)
-  Germanette lake and leisure center (C)

 La Petite Gineste (B)

# All useful information

## **Advices**

- Swimming is available at the Germanette Recreation Center (1.6 km round trip from the trail).
- We recommend visiting the historic village of Serres.

## **How to come ?**

### Transports

Let's limit our trips and use public transportation and carpooling: <https://zou.maregionsud.fr>

### Access

From Laragne-Montéglin (17 km), follow the D 1075 northwest to Serres.

### Advised parking

Tourist office parking lot in Serres.

## **Information desks**

### **Office de Tourisme Sisteron Les Alpes provençales - bureau de Serres**

Place du Lac, 05700 Serres

[serres@sisteron-alpesprovencales.fr](mailto:serres@sisteron-alpesprovencales.fr)

Tel : 04 92 67 00 67

<https://www.sisteron-alpesprovencales.fr/>



# On your path...

---

## The Buëch River (A)

A tributary of the Durance, the Buëch River is a peaceful river that irrigates many apple fields and other orchards along its course. Taking its source in Lus-la-Croix-Haute, the stream stretches for 85 kilometers and drops to an altitude of nearly 2,000 meters.

---

## La Petite Gineste (B)

La Gineste and la Petite Gineste are two small peaks overlooking the historic village of Serres. Although low in altitude, the summit of Petite Gineste allows you to see, here and there, the entire Serres-valley.

---

## Germanette lake and leisure center (C)

The Germanette lake offers a nice refreshing stop. Composed of three natural pools (for swimming, water and fishing activities) is an ideal relaxing place. Swimming is supervised from July 1st to August 31st. A beach bar is open during the summer season and a restaurant all year round.