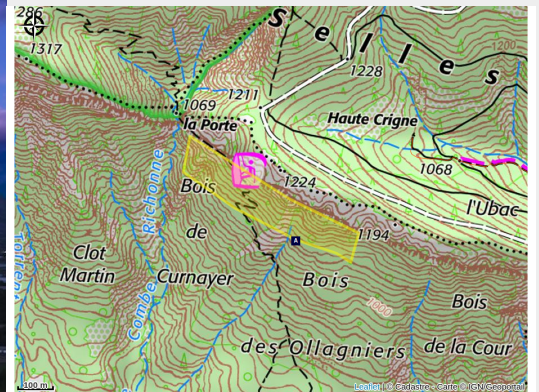


# Climbing site of Villard (Ventavon)

Laragne / Méouge



Soleil couchant sur le village de Ventavon et la falaise (Sam Bié)



*The Ventavon site features a rocky ridge of excellent gray limestone, facing south and climbable in winter despite its altitude (1,000 m).*

*The cliff overlooks the Durance plain. It offers a remarkable view for those for whom a short approach hike is no obstacle to a beautiful climb on highly sculpted limestone.*

## Useful information

Practice : Via ferrata

Period : Fall, winter, early spring

Orientation : ↓ S, ↙ SW

Rating scale :

Niveau : AD (Assez Difficile)(Intermédiaire), D (Difficile), TD (Très difficile)

Themes : Fauna, Flora, Panorama



# Description



*The Villard Cliff (Ventavon) – Photo: Sam Bié*

Facing south at an altitude of 1,000 meters, the Baume Rousse cliff is a winter climbing destination. The climbing here is very varied, with routes to suit all skill levels. The view of the Durance River offers a splendid panorama.

Managed by the Sisteronais-Buëch Community of Communes since 2023, the site offers about a hundred routes up to 35 m long across 5 sectors: La Porte, Marche à l'ombre, Le Chat, La Lune des fous, and Béatrice. Grades range from 5c to 8b+.

**Type of climbing:** bouldering, sport climbing.

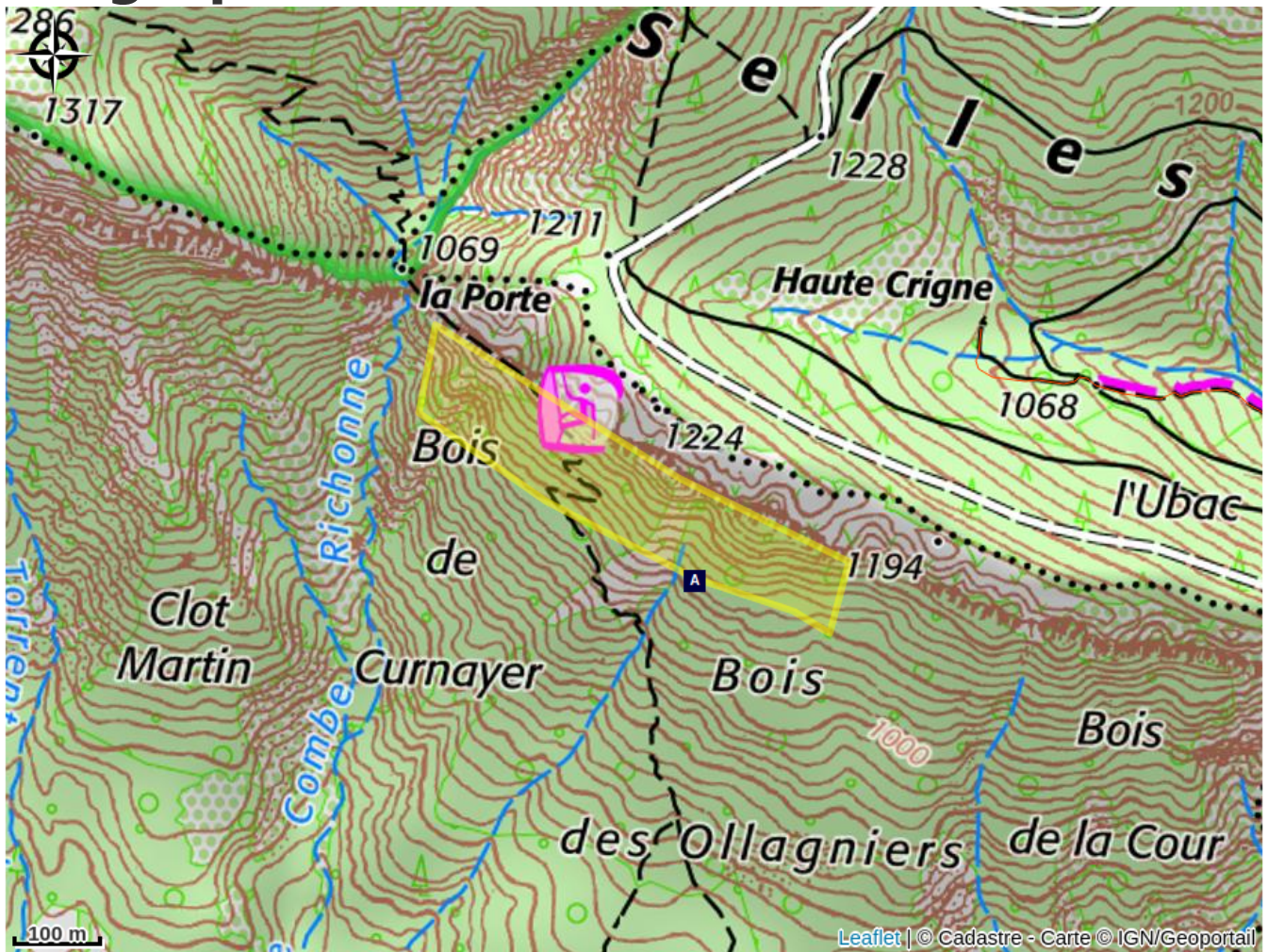
**Profile:** slab, vertical, overhang.

You can find detailed route information in the guidebook *“Escalade autour de Gap (Gap, Buëch, Champsaour, Valgaudemar, Dévoluy)”*.

You can purchase the digital version online [here](#).  
or buy it online [here](#).

**Any incidents or damage can be reported to: [tourisme@sisteronais-buech.fr](mailto:tourisme@sisteronais-buech.fr) or on [Suricate](#)**

# Geographical location



# All useful information

## **Advices**

- **We are currently in a Natura 2000 site.**

The site is therefore of great environmental value. Please take care of it! We are also near a biological reserve managed by the National Forestry Office (ONF): **NO NEW ROUTES MAY BE SET UP.**

Any new route set up without consulting the ONF will be removed.

- **The season, weather conditions, and biodiversity will influence the climbing periods.**

A number of our cliffs face due south. During hot weather (mid-May through at least late August), these cliffs are hardly climbable (except in the late afternoon or evening). Conversely, climbing there is very pleasant in early spring, fall, and winter.

Additionally, certain areas or routes may be closed in the spring and part of the summer due to, for example, the nesting of certain bird species or the presence of bats.

Let's respect them!

It is therefore essential to take these factors into account when planning your outing and to do your research.

- **Rocks and cliffs are preferred habitats for protected species**

that seek shelter from human activity and predators. These areas are home to a rich and sensitive avifauna, as well as bats and specific plant life.

We urge you to be vigilant and to stop your activity if you discover occupied nests.

As such, it is strictly prohibited to route-set without prior authorization and assessment of the implications.

Preserve your environment; leave nothing behind, leave no trace of your visit. Take your trash with you. Fires are prohibited!

In case of urgent need, cover or bury your waste, take your toilet paper with you —do not burn it under any circumstances!

Do not write anything on the rock. Respect the facilities; do not alter them.

Thank you for your cooperation!

- **You are in a natural mountain environment.** At this altitude, the rock can become weakened each year due to the freeze-thaw cycle. Despite

maintenance and cleaning of the rock faces, THE RISK OF ROCKFALL REMAINS.

- **WARNING!** Climbing is undertaken solely at the climbers' own risk, and they remain entirely and solely responsible for the conditions and consequences associated with their activity.

Users bear the consequences of any damage suffered or caused as a result of their own negligence, particularly due to behavior that is inappropriate for the natural state of the area, the site's layout, and/or the dangers normally foreseeable in nature.

- **Safety rules and federal safety guidelines for climbing in natural settings:**

- ▶ It is the responsibility of every climber to assess for themselves, using all available means, the risks involved in attempting a route.
- ▶ Prior training in the use of climbing equipment and safety techniques is essential.
- ▶ Use two anchor points to set up a top-rope or a belay station.
- ▶ **Remember to always tie a knot at the end of the rope!**
- ▶ Wearing a helmet is essential due to the risk of falling rocks.
- ▶ Climbing means knowing how to choose your gear, your own equipment, and the routes you take based on your technical skill level and experience. It also means knowing when to turn back if the site has features you cannot handle given your skill level.

If you encounter guard dogs, the proper actions to take are outlined at the following link: [Médiation Pastorale](#)

## Accessibility

- **Access and parking:** Leave the D1085 (Gap-Sisteron) at Monétier-Allemont and head west on the D942 toward Laragne for 1.2 km. Take a small road on the right opposite three poplar trees and follow the signs to the hamlet of "Le Villard." Park just past Le Villard at the end of the road in the parking lot designated for climbers and hikers.
- **Access on foot:** At the end of the parking lot, a sign indicates the trailhead. Follow it to the base of the cliff.

**i Information desks**

**Office de Tourisme Sisteron Les  
Alpes Provençales - bureau de  
Sisteron**

1 place de la République, 04200 Sisteron

sisteron@sisteron-buech.fr

Tel : 04 92 61 36 50

<https://www.sisteron-alpesprovencales.fr/>

