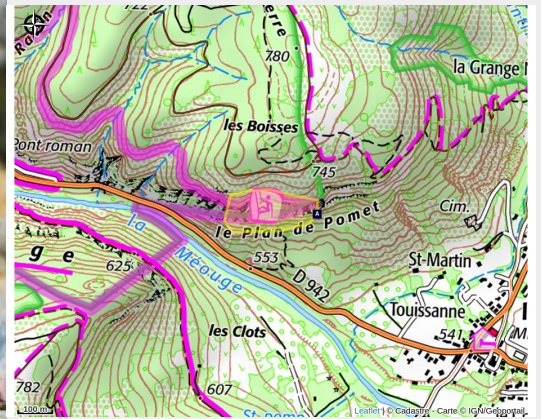


# Climbing site of Baume Rouse (Châteauneuf-de-Chabre)

Laragne / Méouge



Escalade à Baume Rouse (Sam Bié)



*The cliff overlooks the village of Châteauneuf de Chabre and marks the entrance (or exit) to the Méouge Gorges. The site offers varied climbing on beautiful steep or overhanging walls of ochre and blue-gray limestone. The sheer verticality and the limestone's highly sculpted surface, with its small holds, make for routes that really test your finger strength!*



## Useful information

---

Practice : Via ferrata

---

Period : Winter !

---

Orientation : ↓ S

---

Rating scale :

Niveau : AD (Assez Difficile)(Intermédiaire), D (Difficile), TD (Très difficile)

---

Themes : Fauna, Flora, Panorama

# Description



*Baume Rousse site - Photo : Sam Bié*

Facing south at an elevation of 600 meters, the Baume Rousse cliff is the warmest in the Buëch region and therefore very pleasant in winter. Avoid visiting during the day in summer. The climbing here is very varied, with routes to suit all skill levels.

Managed and maintained by the Sisteronais-Buëch Community of Communes, the site offers 62 routes up to 35 m long across 4 sectors: *La Petite Grotte*, *La Grotte*, *Magic Color*, and *Les Chtarbés*. Grades range from 5c to 7c+, including 3 two-pitch routes.

**Please note:** the routes in the lower sector, “La Roche aux Fées,” have been stripped of their gear. The same applies to the first three routes in the left sector, “La Petite Grotte,” and the last three routes on the right in the “Magic Color” sector.

**WARNING: Climbing is prohibited from April 1 to August 31 in the Grotte and Petite Grotte sectors.**

**Type of climbing:** bouldering, sport climbing.

**Profile:** vertical, overhanging.

You can find detailed route information in the guidebooks:

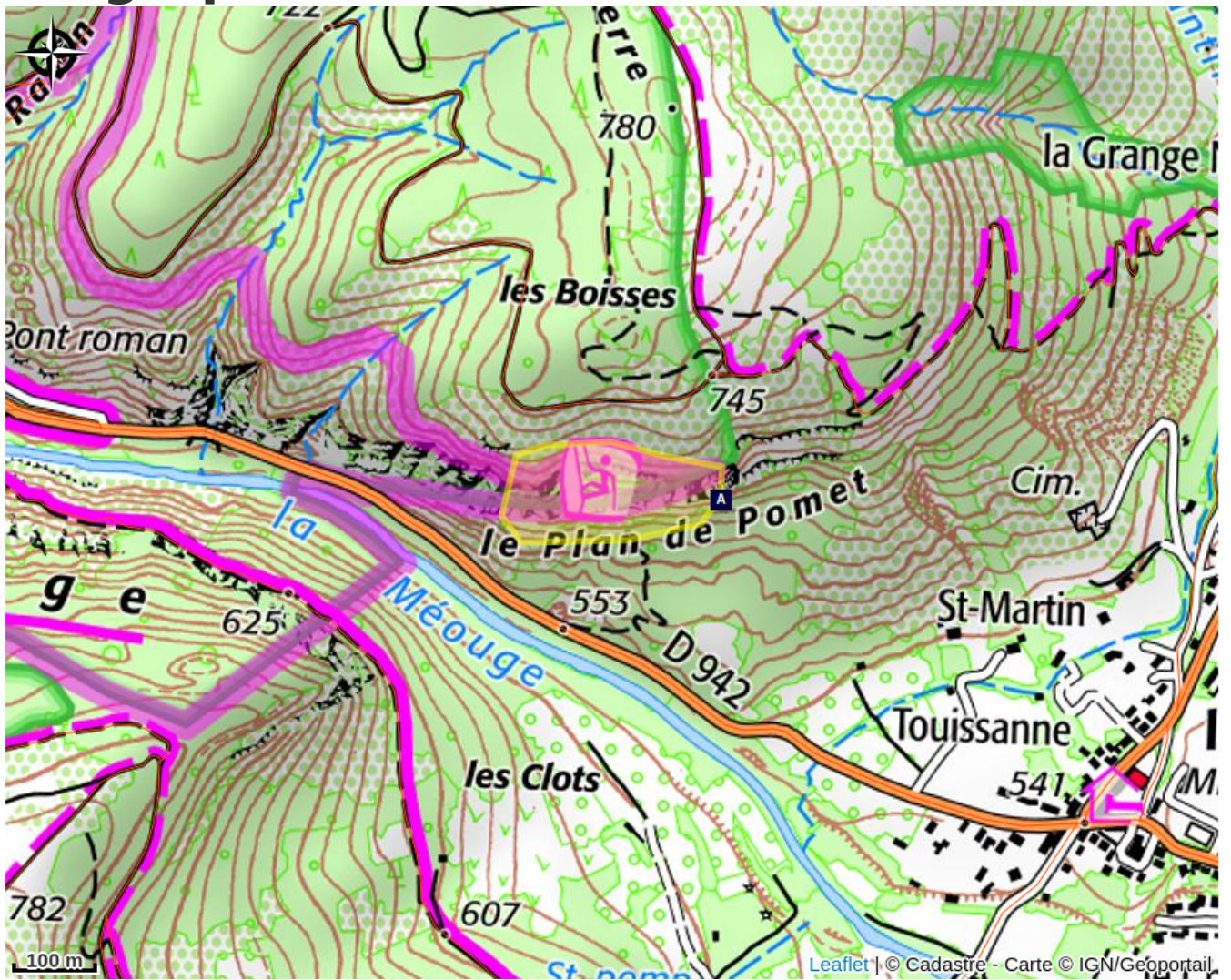
- *Climbing in the Val de Méouge (Antonaves/Barret-sur-Méouge/Châteauneuf-de-Chabre/Eourres/Ribiers).*

- *The Climbing Village, Orpierre.*

You can purchase the guidebooks online [here](#)

Any incidents or damage can be reported to: [tourisme@sisteronais-buech.fr](mailto:tourisme@sisteronais-buech.fr) or on [Suricate](#)

# Geographical location



# All useful information

## **Advices**

- **We are currently in a Natura 2000 site.**

The site is therefore of great environmental value. Please take care of it! We are also near a biological reserve managed by the National Forestry Office (ONF): **NO NEW ROUTES MAY BE SET UP.**

**Any new route set up without consulting the ONF will be removed.**

- **The season, weather conditions, and biodiversity will influence the climbing periods.**

A number of our cliffs face due south. During hot weather (mid-May through at least late August), these cliffs are hardly climbable (except in the late afternoon or evening). Conversely, climbing there is very pleasant in early spring, fall, and winter.

Additionally, certain areas or routes may be closed in the spring and part of the summer due to, for example, the nesting of certain bird species or the presence of bats.

Let's respect them!

It is therefore essential to take these factors into account when planning your outing and to do your research.

- **Rocks and cliffs are preferred habitats for protected species**

that seek shelter from human activity and predators. These areas are home to a rich and sensitive avifauna, as well as bats and specific plant life.

We urge you to be vigilant and to stop your activity if you discover occupied nests.

As such, it is strictly prohibited to route-set without prior authorization and assessment of the implications.

Preserve your environment; leave nothing behind, leave no trace of your visit. Take your trash with you. Fires are prohibited!

In case of urgent need, cover or bury your waste, take your toilet paper with you —do not burn it under any circumstances!

Do not write anything on the rock. Respect the facilities; do not alter them.

Thank you for your cooperation!

- **You are in a natural mountain environment.** At this altitude, the rock can become weakened each year due to the freeze-thaw cycle. Despite

maintenance and cleaning of the rock faces, THE RISK OF ROCKFALL REMAINS.

- **WARNING!** Climbing is undertaken solely at the climbers' own risk, and they remain entirely and solely responsible for the conditions and consequences associated with their activity.

Users bear the consequences of any damage suffered or caused as a result of their own negligence, particularly due to behavior that is inappropriate for the natural state of the area, the site's layout, and/or the dangers normally foreseeable in nature.

- **Safety rules and federal safety guidelines for climbing in natural settings:**

- ▶ It is the responsibility of every climber to assess for themselves, using all available means, the risks involved in attempting a route.
- ▶ Prior training in the use of climbing equipment and safety techniques is essential.
- ▶ Use two anchor points to set up a top-rope or a belay station.
- ▶ **Remember to always tie a knot at the end of the rope!**
- ▶ Wearing a helmet is essential due to the risk of falling rocks.
- ▶ Climbing means knowing how to choose your gear, your own equipment, and the routes you take based on your technical skill level and experience. It also means knowing when to turn back if the site has features you cannot handle given your skill level.

**If you encounter guard dogs, the proper actions to take are outlined at the following link: [Médiation Pastorale](#)**

## Accessibility

- **Parking:** A parking lot located 1 km northwest of the village of Châteauneuf-de-Chabre, along the Route des Gorges de la Méouge.
- **Access on foot:** 15 minutes. The starting point is marked by a sign. Follow the trail to the base of the climbing routes.

## **i** Information desks

### **Office de Tourisme Sisteron Les Alpes Provençales - bureau de Laragne**

Place des Aires, None 05300 Laragne-Montéglin

laragne@sisteron-buech.fr

Tel : 04 92 65 09 38

<https://www.sisteron-alpesprovencales.fr/>



### **Office de Tourisme Sisteron Les Alpes Provençales - bureau de Sisteron**

1 place de la République, 04200 Sisteron

sisteron@sisteron-buech.fr

Tel : 04 92 61 36 50

<https://www.sisteron-alpesprovencales.fr/>

